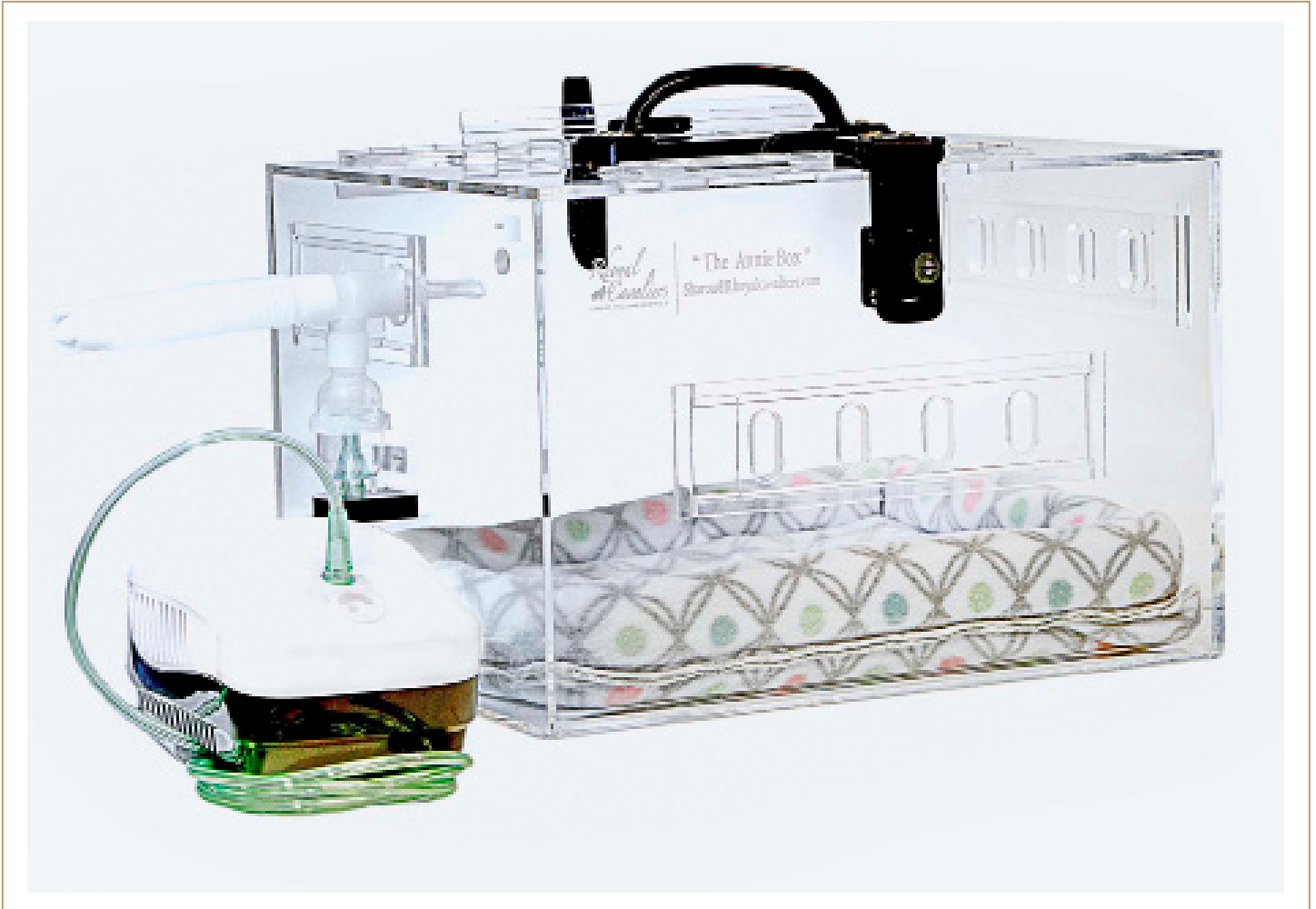


“The Annie Box”

SO MUCH MORE THAN A HOTBOX

*A portable, warm and safe environment
that is easy to set and keep clean.*



USER GUIDE



Royal Cavaliers has been breeding Cavalier King Charles Spaniels since 1993. The Annie Box was created by Sharon Macy to assist in caring for new litters of puppies.

“The Annie Box”

SO MUCH MORE THAN A HOTBOX

USER MANUAL CONTENTS

Items Included In Your Purchase	pg 2	Nebulizer Instructions	pg 6
Identifying Parts (diagram)	pg 3	Troubleshooting and Care	pg 7
Uses	pg 4	Legal Disclaimer	pg 7
The Annie Story	pg 5	Contact Info	pg 8

Items Included In Your Purchase

- The Annie Box
- One Nebulizer
- One Heating Pad & Removable Cover

The Annie Box

Dimensions: 15.5 L x 12.5 W x 10.5 H

Weight: 11 lbs.

The Annie Box is made of ¼" clear Plexiglas to allow viewing of the puppies in the box.

The lid has a comfortable and secure handle for easy opening and confident carrying. The lid is secured with hinges and a back rest when leaving lid open. The front hardware closure can be turned and latched to secure the box to be carried.

On the front and side of The Annie Box are oval vents for ventilation. Vents can be completely open, partially open, or completely closed.

One Nebulizer

Components of the nebulizer include:

- motor
- mouthpiece
- "T" piece
- tube connector (1" in diameter, 6" long)
- flexible tubing
- top and bottom nebulizer cup

A manufacturer's manual is included. *Be sure to read information leaflet for the nebulizer before using.* Take the time to familiarize yourself before needing to use with puppies.

One Heating Pad & Removable Cover

The heating pad cover has bumpers to help keep the puppies from crawling beneath the pad. The pad is designed to keep the puppies warm, cozy and safe.

Slide heating pad into the underside of the cover then set to the desired temp. Medium temperature is recommended.

Additional Parts

Additional nebulizer parts can be obtained by many sources.

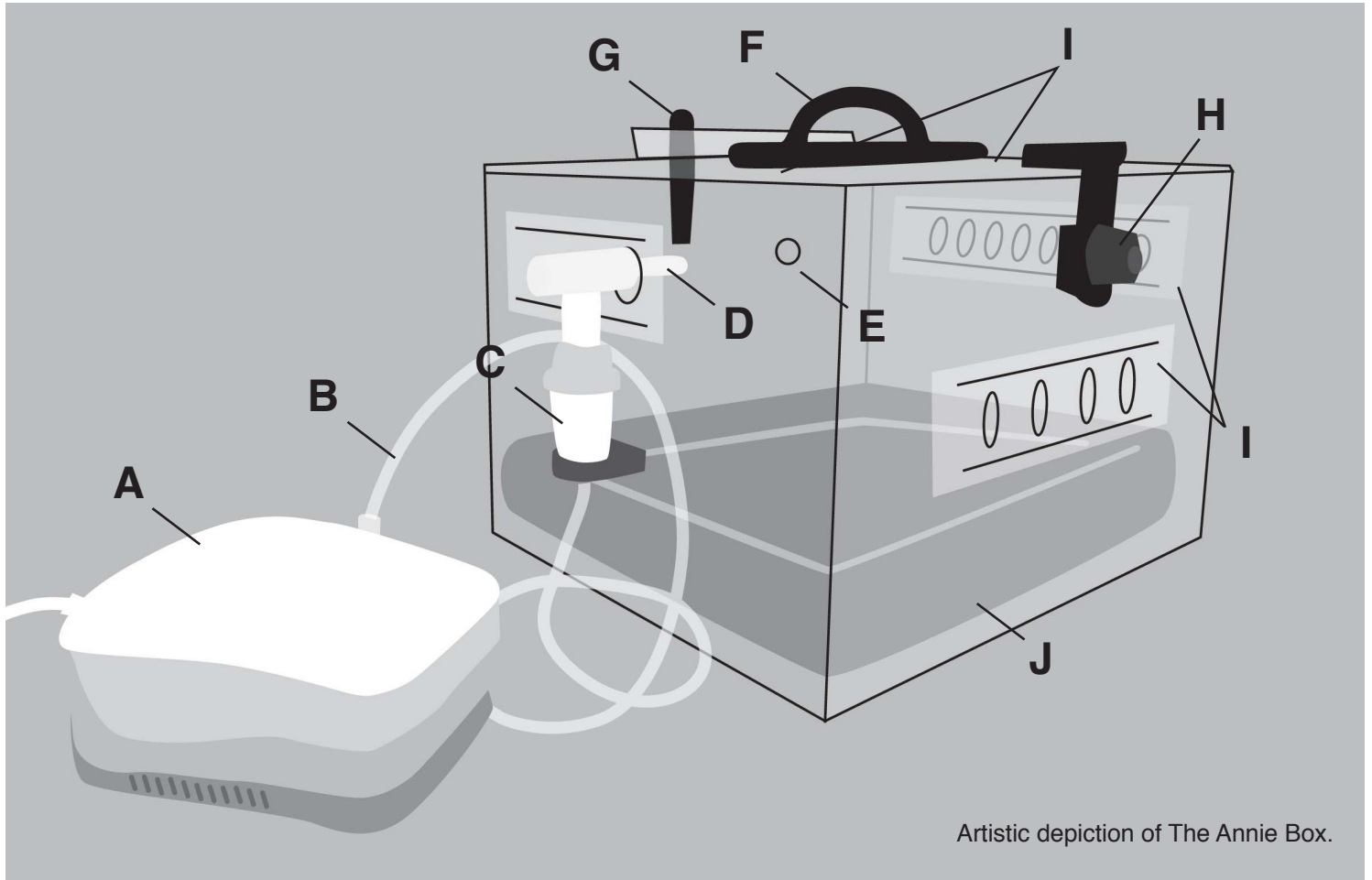
Drive Part Numbers:

- Air filters HCPS E0670 & A7005
- Replaceable/Disposable Neb Kit 500
- Reusable Neb Kit 18254

Additional covers may be purchased separately from Sharon Macy of Rhoyal Cavaliers. See more information at rhyalcavaliers.com

Consult with your veterinarian before using The Annie Box for nebulizing purposes.

Congratulations on your purchase of "The Annie Box," giving you another tool to save your precious puppy.



Artistic depiction of The Annie Box.

Identifying Parts

Nebulizer

- A - motor/condenser
- B - flexible tubing
- C- nebulizer cup
- D - mouthpiece
- E - insert oxygen

Case

- F- carrying handle
- G - lid back rest
- H - secure latch
- I - vents
- J - heating pad

Always keep the vents open when puppies are in The Annie Box unless oxygen or nebulizer is in use.

“The Annie Box”

SO MUCH MORE THAN A HOTBOX



Always keep the vents open when puppies are in The Annie Box unless oxygen or nebulizer is in use.

Uses of "The Annie Box"

Providing Oxygen to Newborns

When facing The Annie Box on the left side near the top front of the box there is a small hole to insert your oxygen tubing from your oxygen supply. Check your current tubing to make sure it fits. Your tubing should be snug. Oxygen tubing of various lengths can be found at most medical supply stores or online.

Nebulizing Puppies

This feature provides a safe way to medicate puppies that tend to move around. To be used for upper respiratory infection, wheezing and shortness of breath. A nebulizer changes medication from a liquid to a mist so that it can be easily inhaled into the lungs (see URL below), opening the airways to the breathing passages and relaxing the muscles.

The Annie Box eliminates the need for puppies to sit still for a nebulizer treatment.

Lungs: <https://www.webmd.com/lung/picture-of-the-lungs>

Consult with your veterinarian regarding puppies prescribed medication and dilutions to be used with nebulizer.

Feeding at Night

The Annie Box is ideal for keeping puppies with you throughout the night.

Helpful Hint: When tube feeding, prepare multiple feedings and slip them inside The Annie Box cover under the heating pad to keep them warm and use throughout the night.

Controlling Temperatures

The Annie Box allows temperatures to be adjusted and puppies viewable without opening the box.

The enclosed Sunbeam heating pad without an auto shut off is placed in the included cover with the temperature adjustment outside the box.

Slide the heating pad into The Annie Box heating pad cover with the cord coming out on the right back corner. Feed the cord with the control through the opening at the bottom right corner of the box. Plug into the power source and turn on. **Using the provided pad cover, a medium temperature is the correct and safe setting.**

Emergency Transportation

The Annie Box is lightweight, fits nicely on the vehicle passenger seat or floor and is ideal for transporting puppies home from c-sections or back and forth to vet appointments. Use the *Feeding At Night, Helpful Hint* if you use the box to run errands and need to do a feeding while you're away. Just pack the puppies and go!

*"That box saved two lives - mine and Annie's.
Annie could be with me no matter where I went."*



Annie's Story

By Heidi Mohn

Annie was born full term weighing only 3oz. Not the smallest I've saved, but Annie had unique challenges. By day three her fontanel was open front to back, ear to ear. Her entire skull centerline was compromised, causing aspiration and inability to swallow. She was a fighter with no desire to fade. I made every effort to keep her alive knowing there was a chance her fontanel might close. Tube feeding and subcutaneous fluids were familiar enough, but I needed to nebulize due to aspiration phenomena and provide intermittent oxygen. It was a daunting challenge keeping her at an ideal temperature without an expensive incubator.

Sharon Macy, of Rhoval Cavaliers, had given me her prototype Plexiglass box a few months earlier in hopes I could provide some feedback on it. My pessimistic mind couldn't imagine how it would be that much better than the typical plastic "hot box" I had used for 25 years which had worked perfectly well (but really hadn't). Annie provided the opportunity to put the box to the test. The clear Plexiglas allowed me to always see Annie from any angle without opening the lid, releasing heat to check her. The secure lid and latch allowed Annie to be carried with me 24/7, out to the kennel to work, next to my

bed and belted into my passenger seat in the car when I had places to go. The non-auto shut off heating pad stays on 24/7 and plugs into my car with an adapter. Vents on the box allow controlled airflow as needed and nebulizing or oxygen capabilities. Annie lived in her box until she was 6 weeks old, still weighing just a pound but her skull began to close and she was able to start eating. From here she grew into a healthy Cavalier.

That box saved two lives, mine and Annie's. The intensity to care successfully for a puppy in Annie's situation is immense even for someone experienced. The portability of a box that is self-contained is what I love the most. Annie could be with me no matter where I went. It allowed me to still function with my other responsibilities and most importantly, sleep well at night with her right next to me. It is great for whelping newborns and vet appointments and c-sections. Annie and I have saved many puppies in that little box since and wouldn't want to ever be without one. We are so grateful to Sharon for coming up with this compact convenient design. Annie is honored to have her endorsement on "The Annie Box" and we highly recommend this to any breeder. It will change your life. ♦



“The Annie Box”

SO MUCH MORE THAN A HOTBOX

Always keep the vents open when puppies are in The Annie Box unless oxygen or nebulizer is in use.



“The Annie Box” Nebulizer Instructions

1. On the left outside of The Annie Box is a black mounted ledge with a hole in it. Feed the nebulizer tubing through the bottom side of the hole upwards.
2. Prepare the prescribed medication and place in the bottom portion of the nebulizer kit cup. Place the top on and twist together. These two parts are threaded to prevent leakage.
3. Attach the bottom of the prepared nebulizer cup to the tube that comes up through the bottom of the hole of the nebulizer ledge. Be sure to push the tube up as far as you can, secure tightly and rest the cup on the top of the ledge.
4. Place the T piece on top of the nebulizer cup and push firmly into place.

5. Slide the nebulizer ventilation to the open position. Then from the inside of The Annie Box place the mouth piece through the oval hole to connect to the "T" piece. This can be a bit tricky and a bit tight but it does go in.

6. Place the 6" flexible piece onto the other end of the "T". Close off the flexible piece by inserting a cotton ball or taping the end.

7. Close all vents. Turn power on and start the procedure. The Annie Box will become cloudy as the medication becomes a mist for puppies to breath in.

8. After the treatment, turn off the power and open the vents leaving the puppies in The Annie Box for few more minutes to maximize the mist and to transition puppies back to regular air.

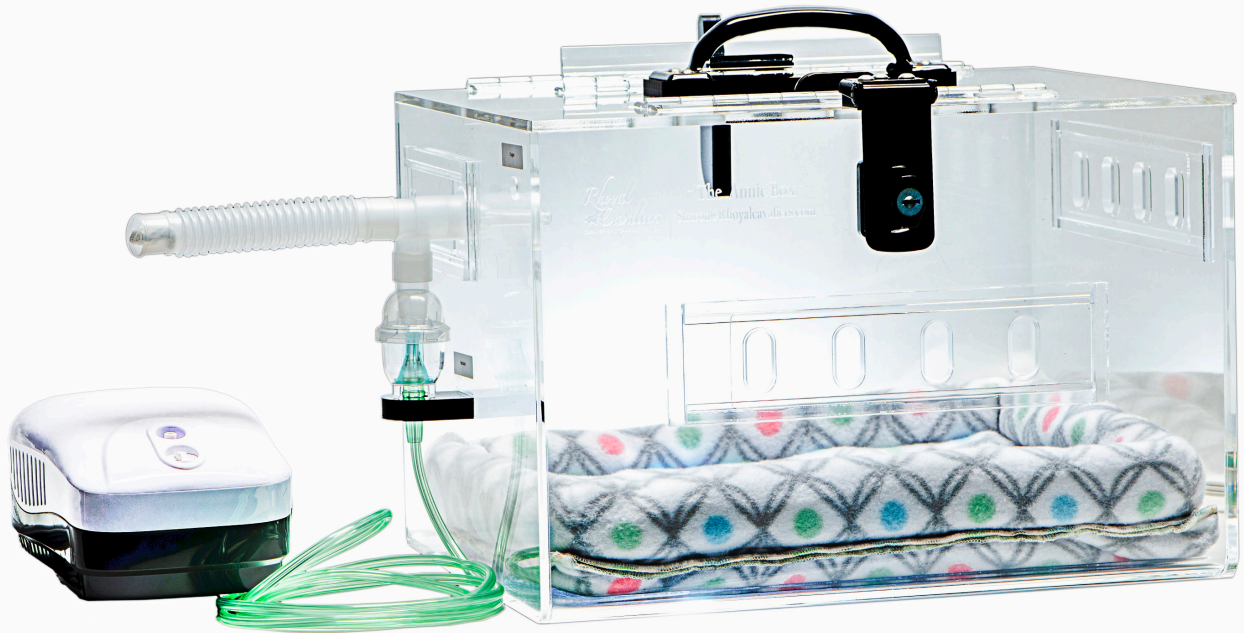
9. The nebulizer kit enclosed is a disposable kit and can be used for an entire treatment. You may purchase re-usable kits (See part numbers on page 1) for future treatments. You may also wash the disposable kit with soap and water and rinse with sterile saline for extended treatments. Be sure to let it completely dry before storing it for future treatments.

Helpful Hint: After rinsing the tubing with sterile saline, connect one end to the nebulizer air pump and turn on. This will blow most of the saline out the other end of the tube. Then hang in a drip dry way to dry completely before storing.

Note: When using the medication in the nebulizer it is normal for film to cover the inside of the glass. This can be easily wiped off using glass cleaner or Lysol wipes.

Always consult your veterinarian regarding prescribed medications, instructions, ratio of medication to sterile saline and doses.

A portable, warm and safe environment that is easy to set and keep clean.



Troubleshooting and Care For “The Annie Box”

My puppy is too hot or cold and fussing.

Adjust temperature on the heating pad and make sure the air vents are open. A good temperature setting is medium.

How do I clean my box?

Wash with soap and water, spray with glass cleaner or Lysol type wipes. Use a soft cloth to avoid scratching the glass. Let air dry, then continue use or store until the next time.

Legal Disclaimer

The information and contents of The Annie Box and this manual are for informational purposes only. All information is provided in good faith, however we make no representation or warranty of any kind, express or implied, regarding the accuracy, adequacy, validity, reliability, availability or completeness of any information.

The information is not intended as substitutes for professional veterinarian advice, diagnosis or treatment. Always seek the advice of your veterinarian or other health care provider with any questions you may have regarding a medical condition. Never disregard professional medical advice or delay in seeking it because of what you have read in this manual.

If you think you have a medical emergency, call your veterinarian immediately. Reliance on any information provided by The Annie Box, The Annie Box employees, others representing The Annie Box, or others is solely at your own risk.

Under no circumstances shall we have any liability to you for any loss or damage of any kind incurred as a result of the use of The Annie Box or reliance on any information provided in this manual or on any website providing information on The Annie Box. Your use of The Annie Box and your reliance on any information is solely at your own risk.

Rhoyal
 *Cavaliers*
CAVALIER KING CHARLES SPANIELS

Sharon Macy

206.399.0088

sharon@rhoyalcavaliers.com

rhoyalcavaliers.com

